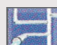
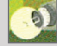

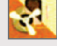


SPECIFICATIONS

| | |
|--|---|
|  | STRUCTURE : R.C.C Framed structure. |
|  | WALLS : C.C brick masonry in cement mortar. |
|  | PLASTERING : Double coat plastering with sponge finish. |
|  | DOORS : Main door with teak wood and teak wood shutters, other doors with teak wood frames and flush shutters. |
|  | WINDOWS : UPVC/PVC Windows with safety iron grill. |
|  | FLOORING : Johnson Vitrified tiles flooring for all rooms, corridors, balconies & Marble for staircases and 5" skirting will be provided. Bathrooms - Ceramic flooring & ceramic dado up to door height. |
|  | KITCHEN : Polished granite slab for kitchen platform with stainless steel sink and 2'6" ceramic dado over the kitchen platform, provision for exhaust fan and shelves. |

| | |
|---|---|
|  | WATER SUPPLY : Bore well and water from over head separate tanks. |
|  | ELECTRICAL FITTING : Legrand Switches, Multi core wires will be used and adequate light, fan and power points for fridge and geyser. M.Bed room - Provision for T.V., Telephone and net. |
|  | PAINTS : Lappam finish and emulsion paints for inner walls and ceiling. Asian exterior paints will be used. Enamel painting for doors and windows. |
|  | BATHROOM : Cera/other reputed brand sanitary ware. Two western / Indian style and wash basin will be provided. Provision for exhaust fan. |
|  | LIFT : 5 passenger capacity lift will be provided. |
|  | PARKING AREA : Parking Tiles. |
|  | AMENITIES : Car parking, Electrical Transformer, Water meters, Elevator & Generator. Rs. 2,00,000/- |
|  | EXTRAS : VAT, Service tax and Registration charges. |



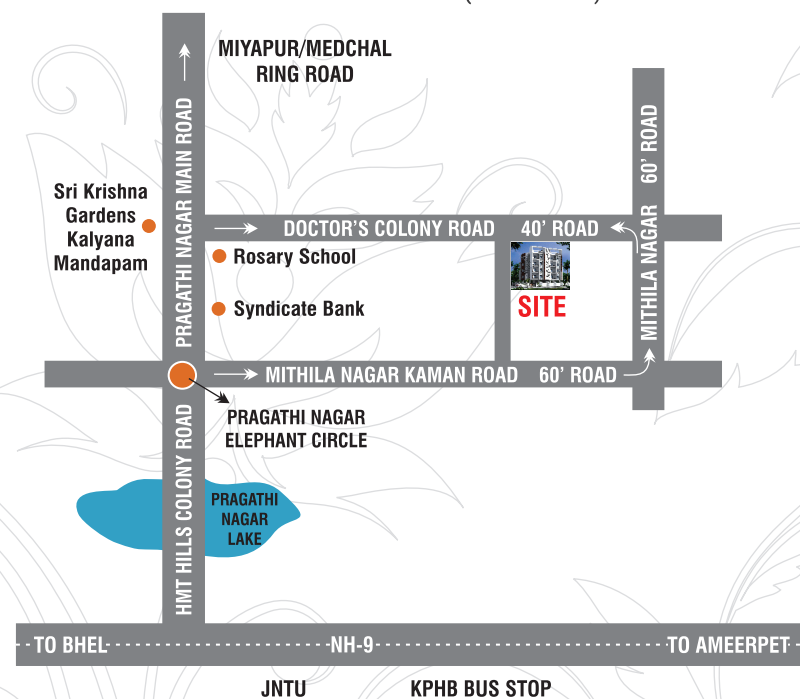
ANSHI
Enclave
The lap of luxury living

A project by **PRUTHVI DEVELOPERS**



a landmark landmark of
ultimate luxury
ultimate luxury

LOCATION MAP (NOT TO SCALE)



Promoters

PRUTHVI DEVELOPERS

Plot no : 60, Near Rosary School,
 Pragathi Nagar, Hyderabad.
 Ph : 9291662729, 9704619754

Architects

S.N.CONSUULTANTS

D.No : 3-5-4/2/1,
 2nd Floor, Bagh Ameer,
 Vivekananda Nagar Colony,
 Kukatpally, Hyderabad - 500072.
 Cell : 98662 70700

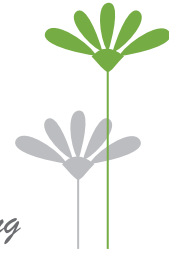
Designed by : I-Vision (+91-9849635519)

Note : This brochure is only a conceptual presentation of the project and not a legal offering. The promoters reserve the right to make changes in elevation, specifications and plans as deemed fit.

2 BHK luxury apartments @ Mithila Nagar
 (PRAGATHI NAGAR)

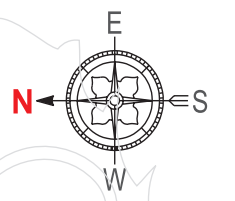
ANSHI Enclave

The lap of luxury living



ANSHI ENCLAVE is a magnificent edifice in the elite neighbourhood. It offers you excellent 2 bedroom flats effuse with most modern facilities for a luxurious lifestyle. Perfectly designed apartments with quality construction to ensure 100% Vaasthu, plenty of natural light & fresh air. Very close to shopping malls, schools, colleges and hospitals. It has all the elements to give you a grand lifestyle and quality living.

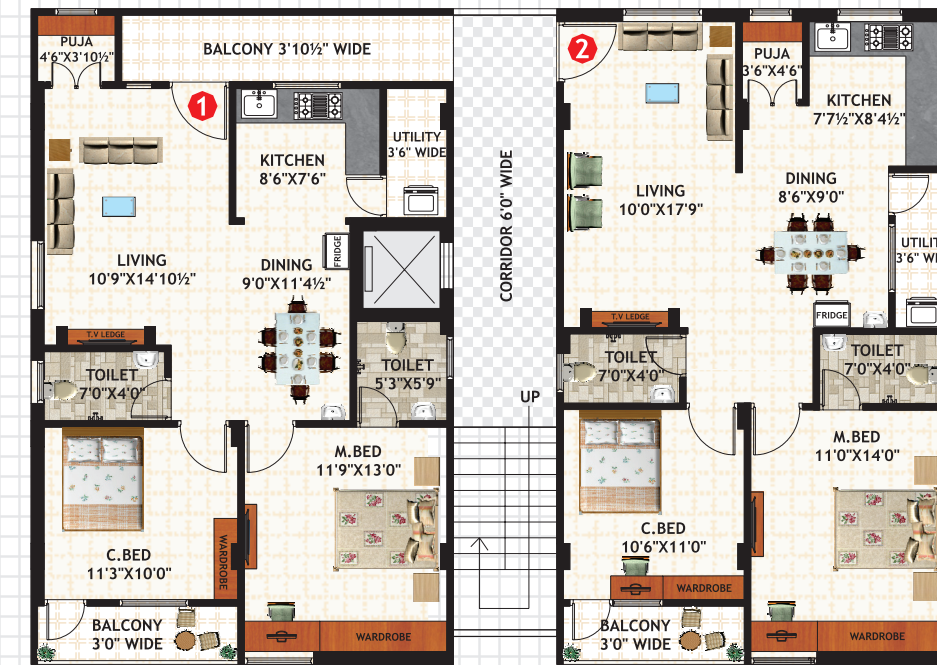
To live a life that is **Perfectly Integrated...**



AREA STATEMENT

| Flat No | Area in S.ft |
|---------|--------------|
| 1 | 1143 |
| 2 | 1116 |

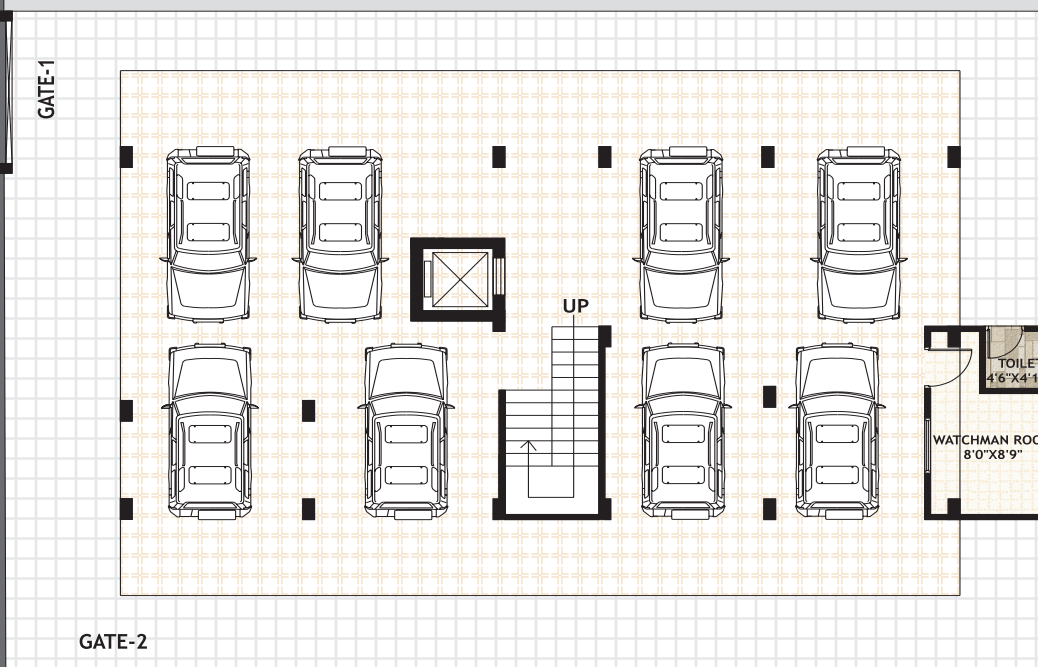
TYPICAL FLOOR PLAN



EXISTING 40'0" WIDE NORTH ROAD

EXISTING 40'0" WIDE WEST ROAD

PARKING PLAN



EXISTING 40'0" WIDE NORTH ROAD

EXISTING 40'0" WIDE WEST ROAD

HIGHLIGHTS

- Approval from GHMC.
- 100% Vaasthu.
- 2.5 Kms from JNTU & Metro station, 7 Kms from Hi-tech city.
- Very close to Montessori, Geetanjali schools & Narayana college.
- Separate Water Meter.
- 3 kms from Oakridge, Ambitus International Schools.
- Manjeera sump facility within a short distance.
- Car Parking, Elevator, Electrical Transformer & Generator.

